



**Noise Monitoring Result**

**Day Time (0700 - 1900hrs on normal weekdays)**

Location: M1a - Harbour Road Sports Centre

Date	Time	Weather	Measurement Noise Level			Baseline Level	Construction Noise Level	Limit Level
			Leq	L10	L90	Leq	Leq	Leq
Unit: dB(A), (30-min)								
28/08/12	10:55	Fine	76.6	80.4	70.1	72	75	75
04/09/12	10:15	Fine	73.3	76.0	68.5	72	67	75
11/09/12	10:30	Fine	74.0	76.5	68.0	72	69	75
20/09/12	10:27	Cloudy	73.8	76.5	69.0	72	69	75
27/09/12	09:48	Fine	73.4	76.0	69.5	72	67	75

Location: M2b - Noon-day gun area

Date	Time	Weather	Measurement Noise Level			Baseline Level	Construction Noise Level	Limit Level
			Leq	L10	L90	Leq	Leq	Leq
Unit: dB(A), (30-min)								
28/08/12	11:25	Fine	69.8	70.9	67.7	68	66	75
04/09/12	11:00	Fine	70.3	72.0	70.0	68	67	75
11/09/12	11:14	Fine	70.8	73.5	67.5	68	68	75
20/09/12	11:13	Cloudy	70.6	72.0	68.5	68	68	75
27/09/12	13:50	Sunny	68.1	69.0	66.0	68	58	75

Location: M3a - Tung Lo Wan Fire Station

Date	Time	Weather	Measurement Noise Level			Baseline Level	Construction Noise Level	Limit Level
			Leq	L10	L90	Leq	Leq	Leq
Unit: dB(A), (30-min)								
28/08/12	13:00	Fine	68.0	69.6	65.8	69	68	75
04/09/12	13:10	Fine	67.0	68.5	65.0	69	67	75
11/09/12	13:00	Sunny	66.6	68.5	64.0	69	67	75
20/09/12	13:00	Cloudy	66.9	68.5	64.5	69	67	75
27/09/12	10:34	Fine	67.3	69.0	65.0	69	67	75

Location: M4b - Victoria Centre

Date	Time	Weather	Measurement Noise Level			Baseline Noise Level	Construction Noise Level	Limit Level
			Leq	L10	L90	Leq	Leq	Leq
Unit: dB(A), (30min)								
28/08/12	13:45	Fine	72.9	74.0	70.4	67	72	75
04/09/12	13:58	Fine	72.2	73.5	70.5	67	71	75
11/09/12	13:45	Sunny	71.2	72.5	69.0	67	69	75
20/09/12	13:49	Cloudy	71.7	73.5	69.0	67	70	75
27/09/12	11:10	Fine	72.0	74.0	68.5	67	70	75

Location: M5b - City Garden

Date	Time	Weather	Measurement Noise Level			Baseline Level	Construction Noise Level	Limit Level
			Leq	L10	L90	Leq	Leq	Leq
Unit: dB(A), (30min)								
30/08/12	10:11	Fine	75.8	77.9	70.5	68	75	75
04/09/12	14:44	Fine	71.2	72.5	69.5	68	68	75
11/09/12	14:30	Sunny	70.6	72.5	68.5	68	67	75
20/09/12	14:30	Cloudy	70.3	71.5	68.5	68	66	75
27/09/12	13:00	Sunny	68.9	70.0	67.0	68	62	75

Location: M6 - HK Baptist Church Henrietta Secondary School

Date	Time	Weather	Measurement Noise Level			Baseline Level	Construction Noise Level	Limit Level
			Leq	L10	L90	Leq	Leq	Leq
Unit: dB(A), (30-min)								
28/08/12	15:25	Fine	73.5	75.3	71.6	71	70	70
04/09/12	15:39	Fine	74.4	75.5	73.0	71	72	70
11/09/12	15:10	Sunny	73.1	74.5	71.0	71	69	70
20/09/12	15:10	Cloudy	74.5	75.5	73.0	71	72	70
27/09/12	13:20	Fine	73.8	75.0	72.0	71	71	70



**Noise Monitoring Result**

**Day Time (0700 - 1900hrs on normal weekdays)**

Location: M7e - International Finance Centre (Eastern End of Podium) (Reference Station)

Date	Time	Weather	Measurement Noise Level			Baseline Level	Construction Noise Level	Limit Level
			Leq	L10	L90	Leq	Leq	Leq
Unit: dB(A), (30-min)								
28/08/12	08:35	Fine	71.8	73.1	68.7	67	70	N/A
04/09/12	08:38	Fine	71.8	73.0	70.0	67	70	N/A
11/09/12	08:43	Fine	73.8	78.0	67.0	67	73	N/A
20/09/12	08:07	Cloudy	68.1	70.0	64.5	67	62	N/A
27/09/12	15:34	Fine	72.4	73.5	71.0	67	71	N/A

Location: M7w - International Finance Centre (Western End of Podium)

Date	Time	Weather	Measurement Noise Level			Baseline Level	Construction Noise Level	Limit Level
			Leq	L10	L90	Leq	Leq	Leq
Unit: dB(A), (30-min)								
28/08/12	08:00	Sunny	67.5	68.0	64.3	69	68	75
04/09/12	08:00	Fine	67.1	68.5	64.5	69	67	75
11/09/12	08:03	Fine	66.6	68.0	64.0	69	67	75
20/09/12	08:45	Cloudy	67.8	69.0	65.5	69	68	75
27/09/12	14:55	Fine	68.5	70.5	65.5	69	69	75

Location: M8 - City Hall

Date	Time	Weather	Measurement Noise Level			Baseline Level	Construction Noise Level	Limit Level
			Leq	L10	L90	Leq	Leq	Leq
Unit: dB(A), (30-min)								
28/08/12	09:30	Fine	63.1	65.1	60.3	64	63	70
04/09/12	09:25	Fine	63.3	65.5	59.5	64	63	70
11/09/12	09:37	Fine	62.7	65.0	58.5	64	63	70
20/09/12	09:38	Cloudy	65.5	68.5	60.0	64	61	70
27/09/12	16:23	Fne	61.5	64.0	57.5	64	62	70



**Noise Monitoring Result**

**Day Time (0700 - 1900hrs on normal weekdays)**

Location: M1a - Harbour Road Sports Centre

Date	Time	Weather	Measurement Noise Level			Baseline Level	Construction Noise Level	Limit Level
			Leq	L10	L90	Leq	Leq	Leq
Unit: dB(A), (30-min)								
05/10/12	09:20	Fine	74.8	77.5	69.0	72	71	75
09/10/12	10:25	Fine	74.2	77.0	67.5	72	70	75
16/10/12	10:10	Cloudy	74.7	77.0	70.0	72	71	75
26/10/12	10:25	Fine	73.9	76.5	68.5	72	69	75

Location: M2b - Noon-day gun area

Date	Time	Weather	Measurement Noise Level			Baseline Level	Construction Noise Level	Limit Level
			Leq	L10	L90	Leq	Leq	Leq
Unit: dB(A), (30-min)								
05/10/12	11:05	Fine	73.9	74.7	70.5	68	73	75
09/10/12	11:00	Fine	68.2	69.5	66.5	68	59	75
16/10/12	10:55	Cloudy	70.6	72.0	68.5	68	68	75
26/10/12	11:10	Fine	72.5	75.0	69.0	68	71	75

Location: M3a - Tung Lo Wan Fire Station

Date	Time	Weather	Measurement Noise Level			Baseline Level	Construction Noise Level	Limit Level
			Leq	L10	L90	Leq	Leq	Leq
Unit: dB(A), (30-min)								
05/10/12	13:00	Fine	67.2	68.5	64.0	69	67	75
09/10/12	13:00	Fine	66.5	68.0	64.0	69	67	75
16/10/12	13:00	Cloudy	66.7	68.5	64.5	69	67	75
26/10/12	13:00	Fine	66.6	68.5	64.0	69	67	75

Location: M4b - Victoria Centre

Date	Time	Weather	Measurement Noise Level			Baseline Noise Level	Construction Noise Level	Limit Level
			Leq	L10	L90	Leq	Leq	Leq
Unit: dB(A), (30min)								
05/10/12	13:50	Fine	72.0	73.0	70.5	67	70	75
09/10/12	13:40	Fine	72.4	73.5	70.5	67	71	75
16/10/12	13:45	Sunny	72.0	73.0	70.5	67	70	75
26/10/12	13:40	Fine	71.6	73.0	69.5	67	70	75

Location: M5b - City Garden

Date	Time	Weather	Measurement Noise Level			Baseline Level	Construction Noise Level	Limit Level
			Leq	L10	L90	Leq	Leq	Leq
Unit: dB(A), (30min)								
05/10/12	14:35	Fine	69.5	70.0	68.5	68	64	75
09/10/12	14:25	Fine	71.4	73.0	69.5	68	69	75
16/10/12	14:25	Fine	72.4	74.0	70.0	68	70	75
26/10/12	14:30	Fine	70.2	72.0	68.0	68	66	75

Location: M6 - HK Baptist Church Henrietta Secondary School

Date	Time	Weather	Measurement Noise Level			Baseline Level	Construction Noise Level	Limit Level
			Leq	L10	L90	Leq	Leq	Leq
Unit: dB(A), (30-min)								
05/10/12	15:20	Fine	72.5	73.5	70.0	71	68	70
09/10/12	15:10	Fine	73.2	74.5	71.0	71	70	70
16/10/12	15:35	Fine	73.7	75.0	72.0	71	71	70
26/10/12	15:15	Fine	71.0	72.5	69.0	71	59	70



**Noise Monitoring Result**

**Day Time (0700 - 1900hrs on normal weekdays)**

Location: M7e - International Finance Centre (Eastern End of Podium) (Reference Station)

Date	Time	Weather	Measurement Noise Level			Baseline Level	Construction Noise Level	Limit Level
			Leq	L10	L90	Leq	Leq	Leq
Unit: dB(A), (30-min)								
05/10/12	08:30	Fine	72.6	74.0	71.0	67	71	N/A
09/10/12	08:30	Fine	71.9	73.0	70.0	67	70	N/A
16/10/12	08:38	Cloudy	70.8	72.0	67.5	67	69	N/A
26/10/12	08:35	Fine	70.5	72.0	66.0	67	68	N/A

Location: M7w - International Finance Centre (Western End of Podium)

Date	Time	Weather	Measurement Noise Level			Baseline Level	Construction Noise Level	Limit Level
			Leq	L10	L90	Leq	Leq	Leq
Unit: dB(A), (30-min)								
05/10/12	08:00	Fine	65.7	67.0	63.5	69	66	75
09/10/12	08:00	Fine	66.3	67.5	64.0	69	66	75
16/10/12	08:00	Cloudy	65.7	67.0	63.5	69	66	75
26/10/12	08:00	Fine	66.8	68.0	64.0	69	67	75

Location: M8 - City Hall

Date	Time	Weather	Measurement Noise Level			Baseline Level	Construction Noise Level	Limit Level
			Leq	L10	L90	Leq	Leq	Leq
Unit: dB(A), (30-min)								
05/10/12	09:30	Fine	65.0	67.0	60.5	64	59	70
09/10/12	09:30	Fine	63.1	65.0	60.0	64	63	70
16/10/12	09:25	Cloudy	64.1	66.5	59.0	64	54	70
26/10/12	09:30	Fine	63.4	65.5	59.5	64	63	70



**Noise Monitoring Result**

**Day Time (0700 - 1900hrs on normal weekdays)**

Location: M1a - Harbour Road Sports Centre

Date	Time	Weather	Measurement Noise Level			Baseline Level	Construction Noise Level	Limit Level
			Leq	L10	L90	Leq	Leq	Leq
Unit: dB(A), (30-min)								
01/11/12	10:25	Fine	72.4	75.5	66.0	72	59	75
06/11/12	10:15	Fine	73.2	76.0	67.5	72	66	75
13/11/12	11:25	Fine	72.0	75.0	65.5	72	72	75
20/11/12	08:05	Cloudy	73.4	75.5	68.5	72	67	75

Location: M2b - Noon-day gun area

Date	Time	Weather	Measurement Noise Level			Baseline Level	Construction Noise Level	Limit Level
			Leq	L10	L90	Leq	Leq	Leq
Unit: dB(A), (30-min)								
01/11/12	11:00	Fine	70.7	72.5	68.5	68	68	75
06/11/12	11:00	Fine	71.4	72.5	69.0	68	69	75
13/11/12	13:00	Fine	72.8	74.5	70.8	68	71	75
20/11/12	9:10	Cloudy	71.0	74.0	67.0	68	68	75

Location: M3a - Tung Lo Wan Fire Station

Date	Time	Weather	Measurement Noise Level			Baseline Level	Construction Noise Level	Limit Level
			Leq	L10	L90	Leq	Leq	Leq
Unit: dB(A), (30-min)								
01/11/12	13:00	Fine	66.8	68.5	63.5	69	67	75
06/11/12	13:00	Fine	67.0	68.5	63.5	69	67	75
13/11/12	13:40	Fine	67.1	68.5	64.5	69	67	75
20/11/12	13:15	Cloudy	66.2	67.5	63.5	69	66	75

Location: M4b - Victoria Centre

Date	Time	Weather	Measurement Noise Level			Baseline Level	Construction Noise Level	Limit Level
			Leq	L10	L90	Leq	Leq	Leq
Unit: dB(A), (30min)								
01/11/12	13:39	Fine	73.2	75.0	70.0	67	72	75
06/11/12	13:35	Fine	71.3	72.5	69.5	67	69	75
13/11/12	14:25	Fine	71.2	72.0	69.0	67	69	75
20/11/12	14:00	Cloudy	71.4	72.5	68.0	67	69	75

Location: M5b - City Garden

Date	Time	Weather	Measurement Noise Level			Baseline Level	Construction Noise Level	Limit Level
			Leq	L10	L90	Leq	Leq	Leq
Unit: dB(A), (30min)								
01/11/12	14:20	Fine	72.4	73.0	70.5	68	70	75
06/11/12	14:15	Fine	71.1	72.0	69.5	68	68	75
13/11/12	15:10	Fine	70.5	71.0	69.0	68	67	75
20/11/12	14:50	Cloudy	69.8	71.0	68.0	68	65	75

Location: M6 - HK Baptist Church Henrietta Secondary School

Date	Time	Weather	Measurement Noise Level			Baseline Level	Construction Noise Level	Limit Level
			Leq	L10	L90	Leq	Leq	Leq
Unit: dB(A), (30-min)								
01/11/12	15:00	Fine	74.3	75.5	72.5	71	72	70
06/11/12	15:00	Fine	74.2	75.0	72.5	71	72	70
13/11/12	15:50	Fine	72.9	76.3	67.8	71	69	70
20/11/12	15:30	Cloudy	72.5	73.5	70.5	71	68	70



**Noise Monitoring Result**

**Day Time (0700 - 1900hrs on normal weekdays)**

Location: M7e - International Finance Centre (Eastern End of Podium) (Reference Station)

Date	Time	Weather	Measurement Noise Level			Baseline Level	Construction Noise Level	Limit Level
			Leq	L10	L90	Leq	Leq	Leq
Unit: dB(A), (30-min)								
01/11/12	8:35	Fine	67.3	70.2	65.9	67	58	N/A
06/11/12	8:35	Fine	70.4	71.5	68.5	67	68	N/A
13/11/12	9:50	Fine	69.1	71.0	65.5	67	65	N/A
20/11/12	10:15	Cloudy	70.2	71.0	67.5	67	68	N/A

Location: M7w - International Finance Centre (Western End of Podium)

Date	Time	Weather	Measurement Noise Level			Baseline Level	Construction Noise Level	Limit Level
			Leq	L10	L90	Leq	Leq	Leq
Unit: dB(A), (30-min)								
01/11/12	08:00	Fine	65.1	65.9	64.5	69	65	75
06/11/12	08:00	Fine	67.5	69.3	65.0	69	68	75
13/11/12	9:15	Fine	66.9	68.0	64.0	69	67	75
20/11/12	10:50	Cloudy	67.6	69.0	65.5	69	68	75

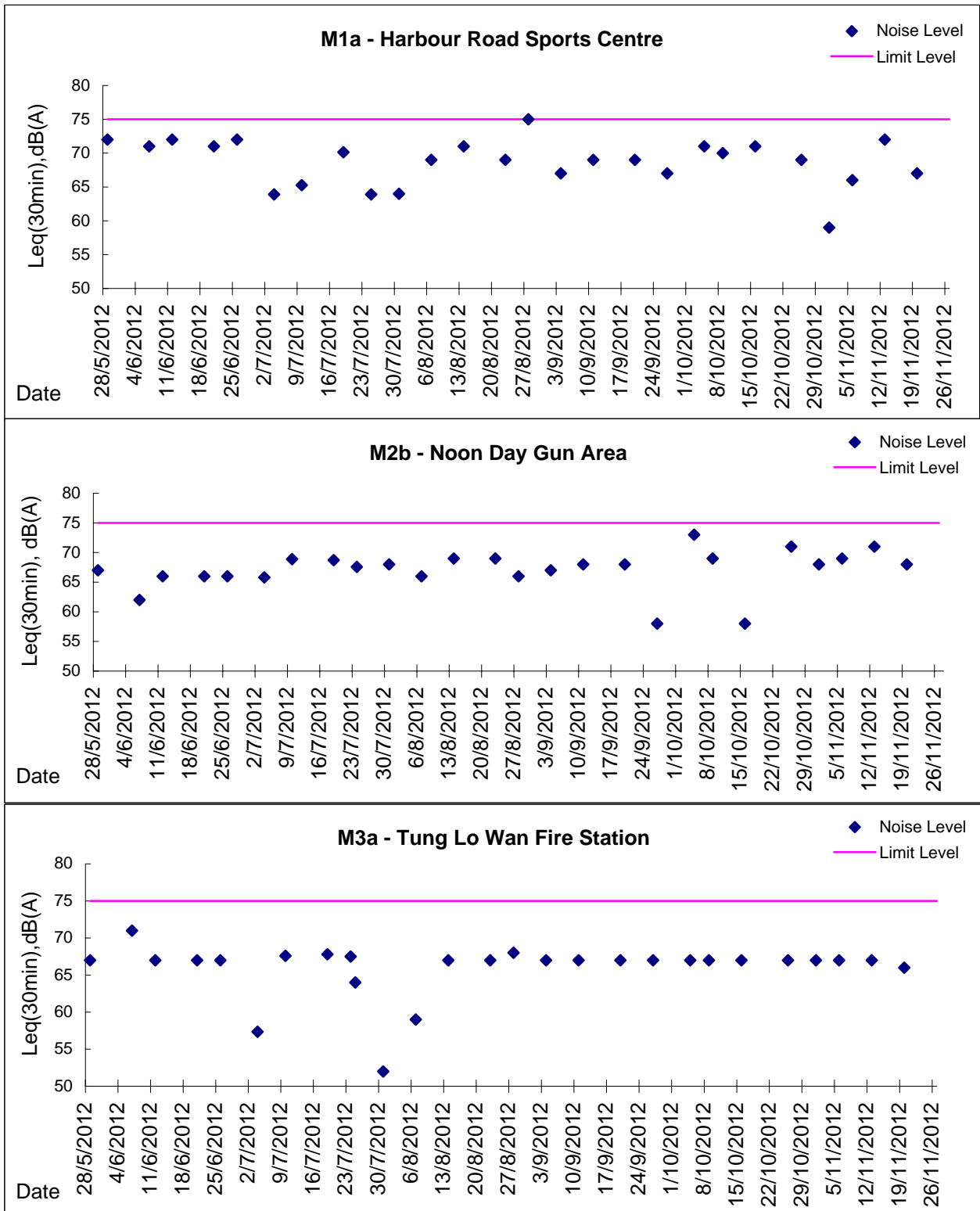
Location: M8 - City Hall

Date	Time	Weather	Measurement Noise Level			Baseline Level	Construction Noise Level	Limit Level
			Leq	L10	L90	Leq	Leq	Leq
Unit: dB(A), (30-min)								
01/11/12	09:25	Fine	63.2	66.0	58.5	64	63	70
06/11/12	09:25	Fine	65.9	68.5	59.5	64	62	70
13/11/12	10:35	Fine	63.5	65.6	57.5	64	64	70
20/11/12	11:30	Cloudy	59.8	62.5	55.5	64	60	70



Graphic Presentation of Noise Monitoring Result

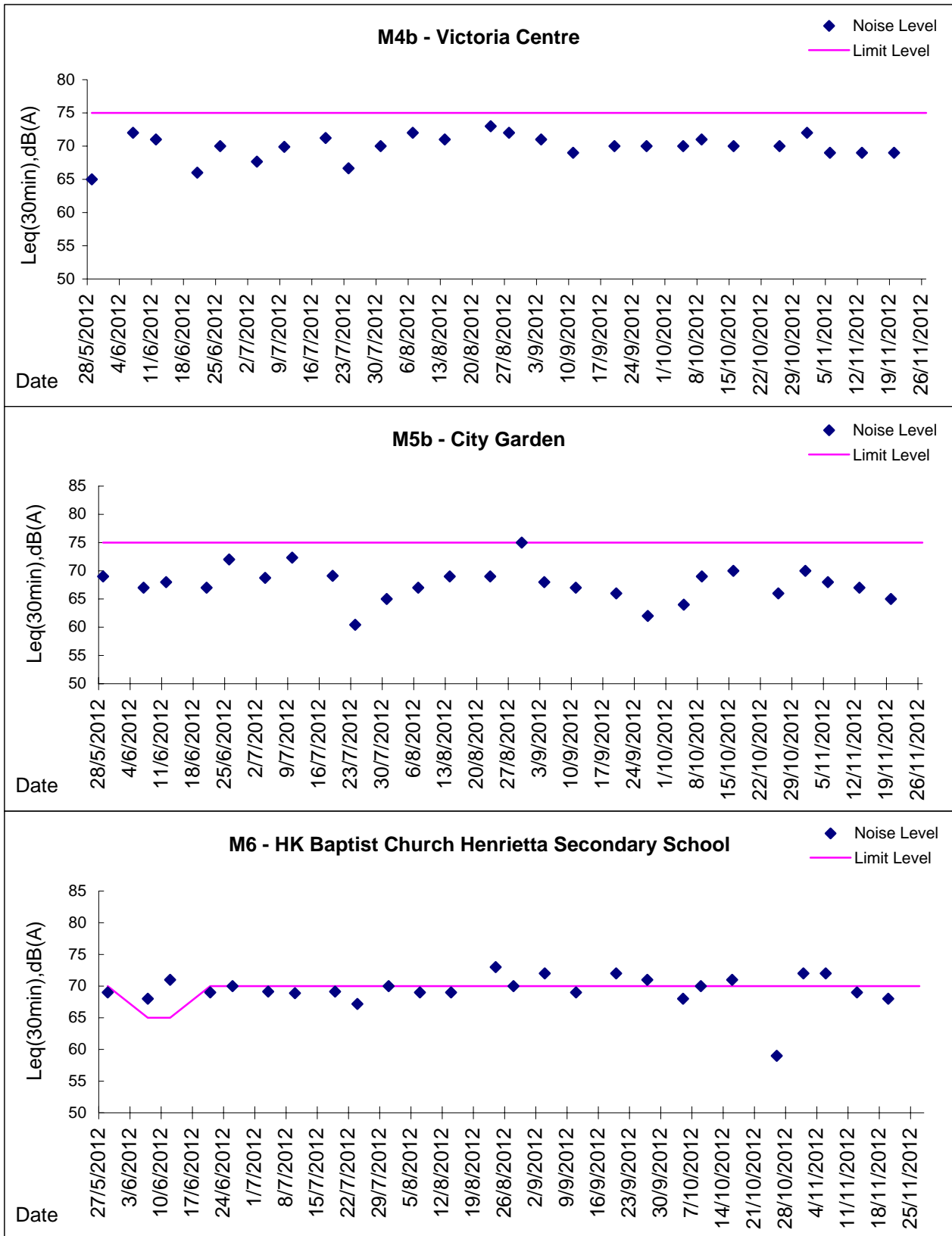
Day Time (0700 - 1900hrs on normal weekdays)





Graphic Presentation of Noise Monitoring Result

Day Time (0700 - 1900hrs on normal weekdays)

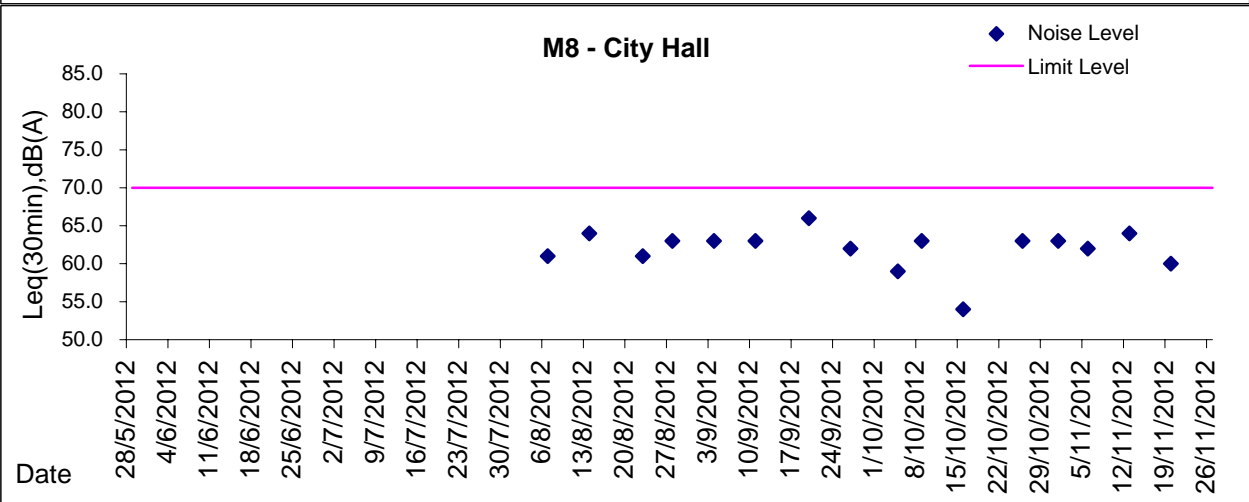
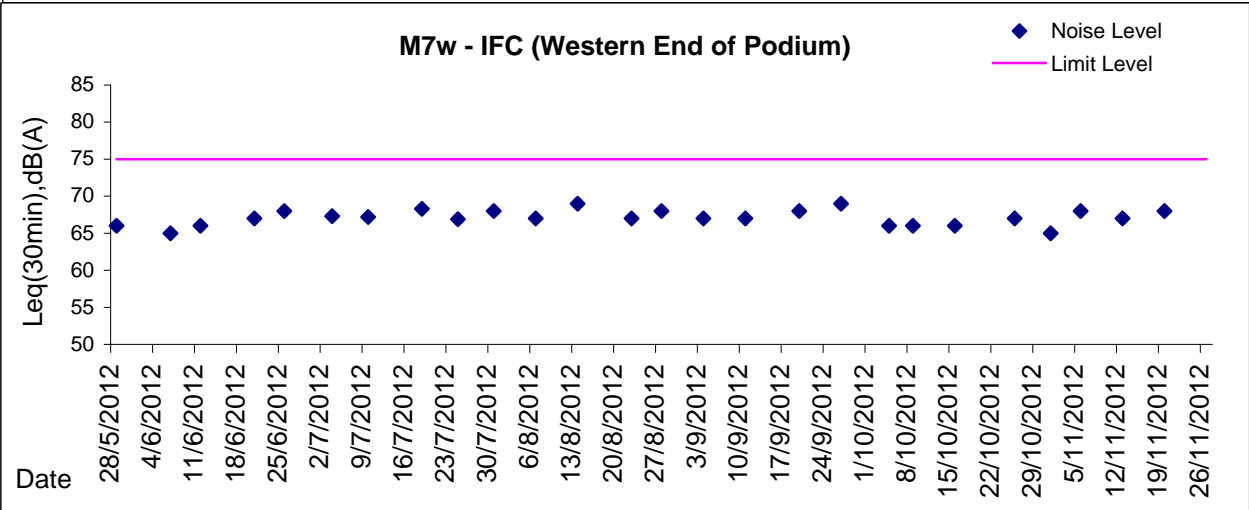
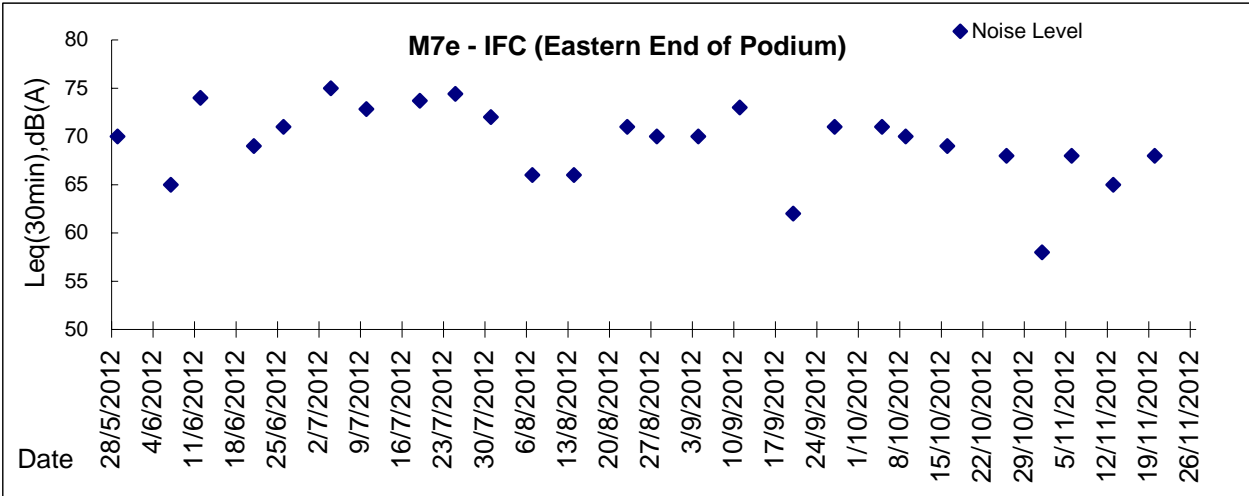






**Graphic Presentation of Noise Monitoring Result**

**Day Time (0700 - 1900hrs on normal weekdays)**



\* Remark: M7e - IFC (Eastern End of Podium) is a reference monitoring station